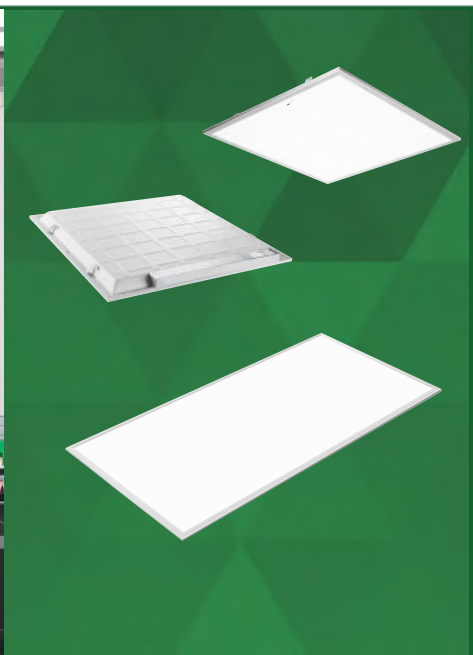


LED Back- Lit Panel Light



Key Features

- This ultra-thin ceiling troffer seamlessly into standard drop ceiling troffer.
- Openings or can be surface mounted to ceilings and walls.
- Suitable for retrofit and new construction.
- Easy and quick to install.
- Top of Class Efficacy of 125Lm/W or greater.
- Even light diffusion across panel surface.
- Standard 3-in-1 dimming(0-10V;PWM;Rx)

Input Voltage: AC100-277V
 Operating frequency: 50/60Hz
 Power factor: >0.95
 Ambient temperature range: -20°C~+45°C
 THD: ≤10%
 IP Rating: IP40
 Beam angle: 120°

Optional Accessories



Motion Sensor



Sensor Remote



Emergency Driver

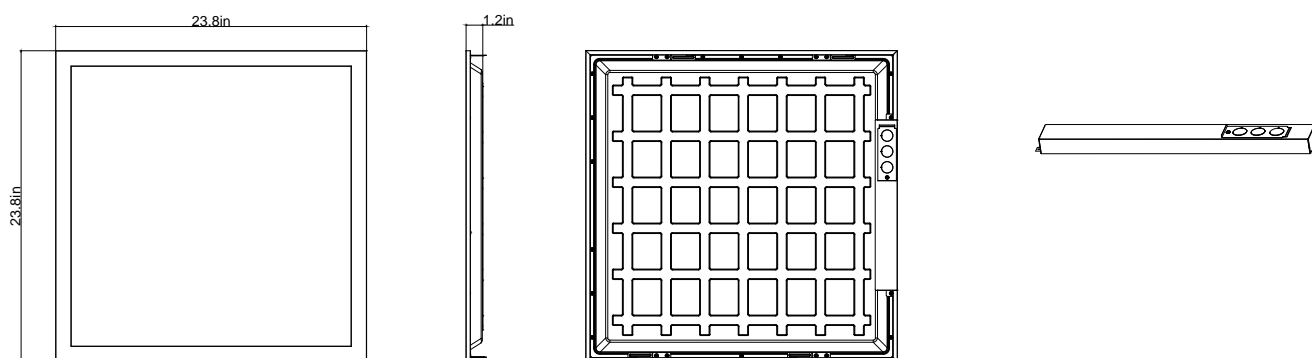


Surface Mount Kit

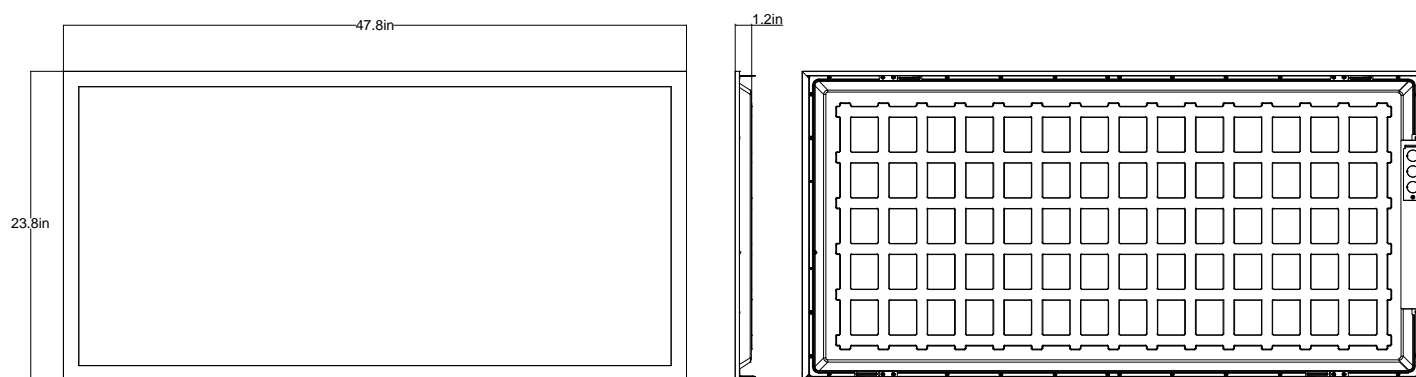
| Model No | Power (W) | Voltage | CRI | 3000-5000K | | Dimension | Weight (lbs) |
|-----------------|-----------|----------|-----|------------|----------|----------------|--------------|
| | | | | Lumens | Efficacy | | |
| ML-PS2*2-F40-CC | 40W | 100-277V | >80 | 5000 lm | 125 lm/W | 23.8*23.8*1.2" | 4.85 |
| ML-PS2*4-F72-CC | 72W | 100-277V | >80 | 9000 lm | 125 lm/W | 47.8*23.8*1.2" | 8.5 |

Dimensions

ML-PS2*2 40W

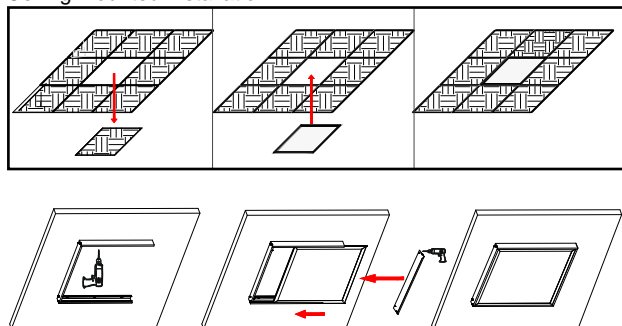


ML-PS2*4 49W,60W,72W



Installation Diagram

Ceiling Mounted Installation



*Surface Mount kits not included. Additional Accessory

Distribution Diagram

