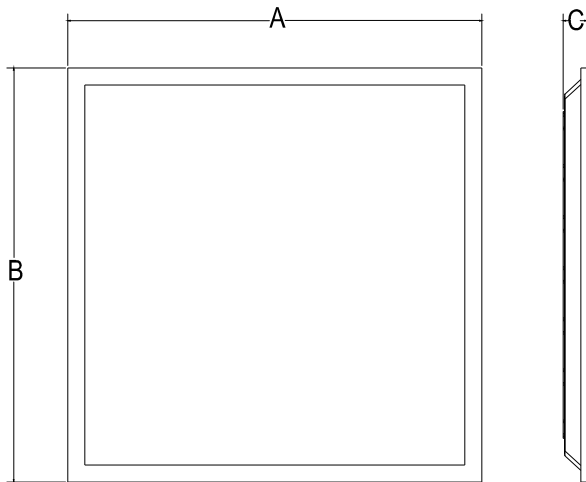


## LED Panel Light



Maximum overall	A	B	C
2*2ft	603mm	603mm	30mm
2*4ft	1213mm	603mm	30mm



## FEATURES

Input voltage: AC100-277V

Operating frequency: 50/60Hz

Power factor: > 0.95

Ambient temperature range: -20°C ~+45°C

Color Temp: 6500K

Dimmable: 3-in-1 dimming

THD: ≤10%

IP Rating: IP40

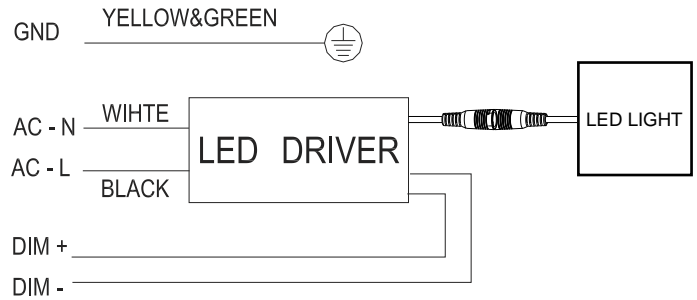
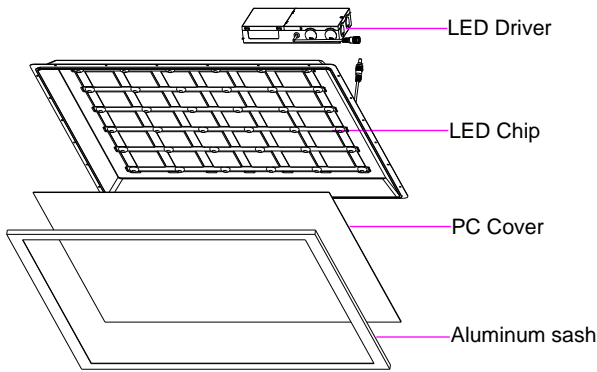
CRI: >Ra80

Beam angle: 120°

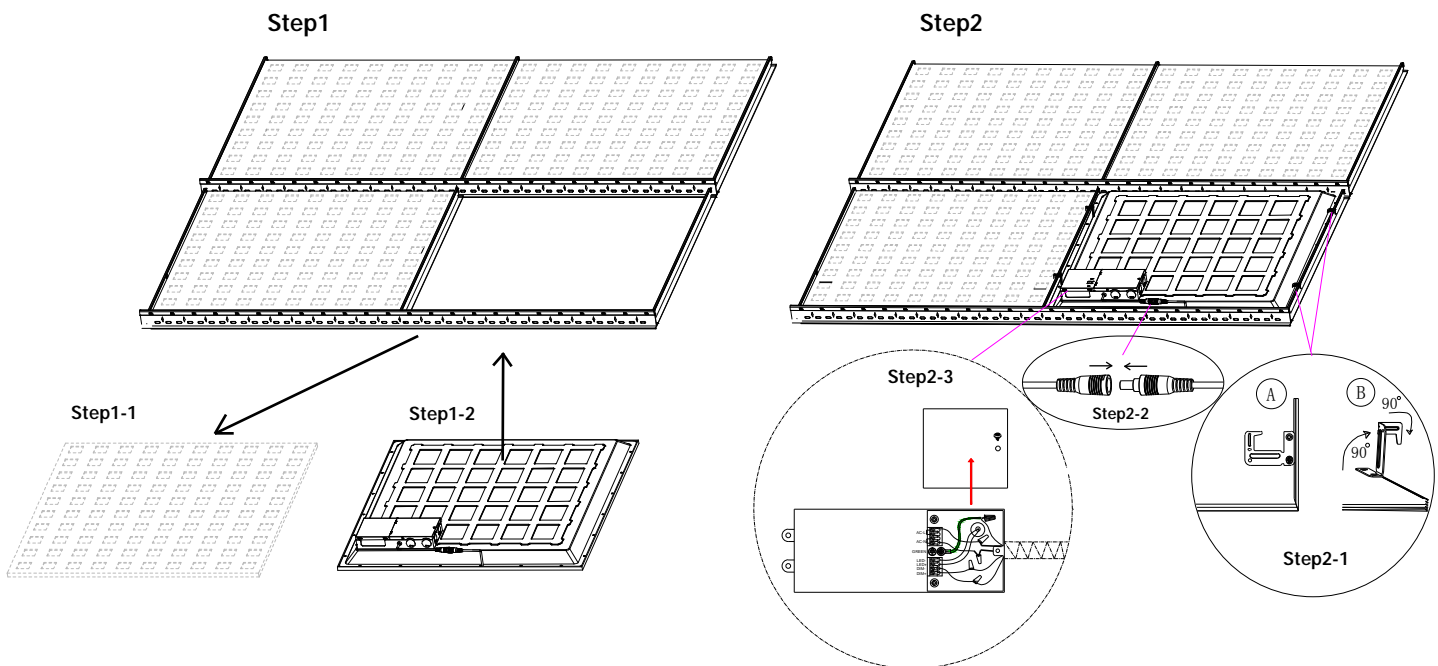
- Luminous Flux:>125lm/w
- Housing material:6063-T5 5
- years' warranty
- ETL

## PARAMETER

Length	Product code	Certification	CRI	Wattage	Description		Lumens 3000-5000K	Packing/carton	G.W./carton
						Function			
2*2FT	ML-PS2*2-40-65	ETL/cETLus	>80	40W		3-in-1 dimming(0-10V;PWM;Rx)	5000 LM	25 * 25 * 7in - 4 pieces	27lbs
2*4FT	ML-PS2*4-72-65	ETL/cETLus	>80	72W		3-in-1 dimming(0-10V;PWM;Rx)	9000 LM	52 * 25 * 7in - 4 pieces	44lbs



## INSTALLATION INSTRUCTION



**Step 1:** Make sure of all the power is off before installing. Remove the one ceiling tile that you need to install light fixture on. Then place the light fixture on the T-bar carefully and make sure it is correctly in place and secure.

**Step 2:** Lift the 4 buckles on the back of the panel up by 90° then bend the top part of the buckles 90° towards the direction where you can anchor the light fixture to the T-bar.

**Step 3:** Place the driver on top of the lighting fixture in the back. Connect the cable between the driver and the lighting fixture. Open the driver's junction box and connect the AC wire to the driver correctly (L=black & N=white)

### Warning:

Make sure all the power is off before installation.  
All the installations are required to be done by professionals.